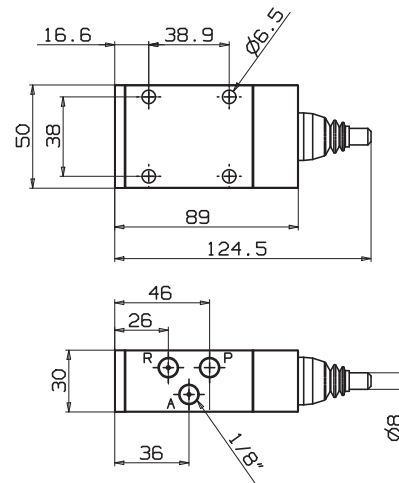


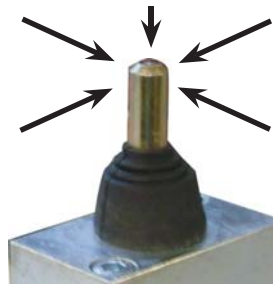


100-018-00043
(link to webpage)



3-WAY PNEUMATIC KNOCK-OFF SWITCH FOR TIPPING CYLINDERS

It is designed to cut off the air flow to the tipping valve and therefore to stop the raise when the cylinder arrives at the planned end-of-stroke position. The activation of the spool can be reached either under compression or through 360° radial load.



This system is normally used as alternative to the end-of-stroke cable connected to the spool of the tipping valve.
MOUNTING EXAMPLE:



Rif: NEW-08-008-ING FINECORSA PNEUMATICO

Giovedì 13 novembre 2008

Functional diagram

